

NEW HAMPSHIRE
ART ASSOCIATION

62nd Currier Exhibition

CURRIER
MUSEUM
of ART



CURRIER MUSEUM *of* ART

150 ASH STREET
MANCHESTER, NEW HAMPSHIRE 03104
tel. 603.669.6144
web. CURRIER.ORG

NEW HAMPSHIRE ART ASSOCIATION
136 STATE STREET
PORTSMOUTH, NEW HAMPSHIRE 03802
tel. 603.431.4230
web. NHARTASSOCIATION.ORG

The New Hampshire Art Association is a non-profit educational affiliation of visual artists founded in 1940. Today, the organization has over 400 artist members living and working primarily in New Hampshire, Massachusetts, Maine and Vermont. The Association's objective is to stimulate the public's awareness and appreciation for the visual arts and to provide member artists with opportunities for their professional advancement and exhibitions for their creative output.

David Hampson, President
Teri Martin, Vice President
Gina Norris, Secretary
Matt McFarland, Treasurer

Most works in the exhibition are for sale.
Prices available upon request.

Photography by Sky Emmons-Shaw

© 2011 by the Currier Museum of Art
All rights reserved

NEW HAMPSHIRE ART ASSOCIATION

JANUARY 29 - MARCH 6, 2011

62nd Currier Exhibition

The Currier Museum of Art is pleased to host the New Hampshire Art Association's 62nd juried exhibition and to inaugurate its 2011 season with a choice selection of forty-seven works by thirty-six artists from New Hampshire, Maine and Vermont. Special thanks go to our distinguished guest jurors, Dina Deitsch, Associate Curator of Contemporary Art at deCordova Sculpture Park and Museum in Lincoln, Massachusetts, and Jen Mergel, Beal Family Senior Curator of Contemporary Art at the Museum of Fine Arts, Boston, for their thoughtful selection of entries and award winners from over 200 submissions. We are delighted to have had such notable jurors select this year's exhibition.

The NHAA Currier exhibition began in 1947 as a collaboration of two institutions committed to fostering a vibrant artists' community in New Hampshire. This year we have made two important changes to the project. First, the brochure for the exhibition will be available on the Currier's website, which makes the publication more widely available. Second, we have produced a cell phone audio tour with commentary by exhibition award winners, which we hope will be of interest to viewers.

Many people contribute to the success of an exhibition. At the New Hampshire Art Association I would like to thank David Hampson, president; Billie Tooley, former executive director; and Martin Cannata, volunteer coordinator for facilitating a successful exhibition. The entire Currier staff contributed to this exhibition, but I would like to especially acknowledge Nina Bozicnik, assistant curator, who managed this project.

The Currier is grateful to its partners who have helped support the exhibition: TF Moran, Inc. is once again the corporate sponsor of the NHAA annual exhibition. Additional support has been graciously provided by Robert and Anne Cruess. Special thanks to One Dow Court, Inc. for providing space to jury the exhibition. Artists are an important part of the life of New Hampshire and the region, and we are indebted to these partners for supporting this state's and region's diverse arts community.

Susan Strickler
Director and CEO



This exhibition is sponsored by TF Moran, Inc. and Robert and Anne Cruess.

“It was fun - great to see work we’ve never seen before and artists we’ve never seen before. It was really an educational day.”

-Deitsch & Mergel

DINA DEITSCH

Dina Deitsch is Associate Curator of Contemporary Art at deCordova Sculpture Park and Museum in Lincoln, Massachusetts. Prior to deCordova, she held curatorial positions at the Williams College Museum of Art and the Museum of Fine Arts, Boston. She received an M.A. in art history from Williams College and is currently working on her Ph.D. at the Institute of Fine Arts at New York University.



JURORS



Jen Mergel, Robert L. Beal and Enid L. and Bruce A. Beal Senior Curator of Contemporary Art
Linde Family Wing, Museum of Fine Arts, Boston. February 18, 2010. Museum of Fine Arts, Boston.
Photograph © Museum of Fine Arts, Boston.

JEN MERGEL

Jen Mergel is the Beal Family Senior Curator of Contemporary Art at the Museum of Fine Arts, Boston. At the MFA since 2010, Mergel has curated *Kristin Baker: New Paintings*, and is planning the installation of the Museum’s new contemporary collection galleries, opening September 2011. Previously, she was curator of numerous exhibitions at Boston’s Institute of Contemporary Art, including *Tara Donovan, Momentum 13: Eileen Quinlan* and *Charles LeDray: workworkworkworkwork*, and at the Addison Gallery of American Art, Andover, including *Chance Encounters* and *Defying Distinction*. Mergel has taught at Harvard and Boston University and is a native of Boston.



35. Sheli Petersen
Turkey Clan, 2011
 Prisma color, soot and coffee on paper
 28 x 65 ½
CURRIER PRIZE

AWARDS

- Turkey Clan* by Sheli Petersen **CURRIER MUSEUM OF ART PRIZE**
Remember When by Allan B. Hall **JURORS' CHOICE AWARD**
May Third by Ryan John Lefebvre **JURORS' CHOICE AWARD**
Peony and *Happy Family* by Hsiu Norcott **JURORS' CHOICE AWARD**

"We felt that the image itself was striking; the facility with the medium of drawing was impressive. There are evidences of sketches and areas that are unfinished so that we can see the image unfold right in front of us."

-Mergel

"Perhaps this image came out of some strange, unknown history that we don't know about. We thought that it really provided a lot of unknown and provocative narratives that really just drew it to us very immediately."

-Deitsch

WORKS IN THE EXHIBITION

All measurements are in inches;
height precedes width precedes depth



- 1.** Bob Askey
Walton's Dream, 2009
Hand-colored etching
33 x 22



- 2.** Bob Askey
Alice and Bob, 2010
Watercolor and gouache on paper
44 x 54 (in two parts)



- 3.** Jennifer Benn
Geosynchronous Satellites, 2011
Oil on linen
36 x 60



- 4.** Kathryn Broland
Tidal Pool Tapestry, 2010
Acrylic on canvas
24 x 23



- 5.** Dan Brown
False Hellebore, 2010
Archival inkjet print
24 x 18



- 6.** Dan Brown
Frost Bouquet, 2010
Archival inkjet print
24 x 18



- 7.** Kristin Burchsted
Spiritual View, 2010
Archival inkjet print
26 x 19½



8. Jamie Calderwood
Imagined Landscapes: Untitled Park #3, 2010
 Mixed media sculpture
 24 x 24 x 9



9. Richard Cobbett
Got Air, 2011
 Oil on canvas
 40 x 30



10. Arthur DiMambro
Still Life and Geese, 2008
 Oil on board
 48 x 48



11. Arthur DiMambro
Bocce Players, 2008
 Bronze
 16 x 29 x 6



12. Ann Trainor Domingue
Winter's View South, 2010
 Oil on gessoed wood panel
 18 x 18



13. Soosen Dunholter
Shallow Pool, 2010
 Mixed media
 20 x 20



14. Victoria Elbroch
Inner Sanctum II, 2010
 Solar etching
 14 x 7



15. Glenna Evans
Untitled #5, Shavings Series, 2010
 Archival inkjet print
 36 x 24



16. Glenna Evans
Attic, 2009
Archival inkjet print
16 x 20



17. James Faist
Stairway Abstract, Exeter, NH, 2010
Digital print on aluminum
12 x 18



18. Robert Sargent Fay
Penitente Morada, 2010
Toned gelatin silver print
26 x 32



19. Dick Fischer
Apples on Top, 2010
Oil on linen
20 x 17



20. Marissa Girard
Maple Sunset, 2010
Oil and wax on lithographed panel
12 x 12



21. Allan B. Hall
Remember When, 2011
Oil on linen
43 x 34
JURORS' CHOICE AWARD



22. Kathy Patten Hanson
Fringe Series V, 2009
Pen and ink with fabric on paper
14 x 21



23. Kathy Patten Hanson
Fringe Series, VII, 2010
Pen and ink with fabric on paper
15 x 13



24. Nancy Davis Johnson
Island Ledge Garden, 2010
Watercolor on polypropylene plastic
12 x 18



25. Robert Johnson Jr.
Stephen G. Wozniak, Freemason, 2010
Mixed media
42 x 32



26. Ryan John Lefebvre
May Third, 2010
Mixed media
56 x 51
JURORS' CHOICE AWARD



27. Susan Lirakis
Has My Heart Gone to Sleep?, 2011
Pigment print on rag paper
24 x 24



28. Susan Lirakis
When you Hear Water, 2011
Pigment print on rag paper
24 x 24



29. Margaret Merritt
Queen Anne's Lace, 2009
Solar plate etching
17 x 12



30. Nancy Morgan
Grief, 2011
Cotton fabric, batting, thread and tulle
48 x 31½



31. Hsiu Norcott
Peony, 2011
Acrylic and ink on silk
22 x 28

JURORS' CHOICE AWARD



32. Hsiu Norcott
Happy Family, 2011
Acrylic and ink on silk
22 x 28

JURORS' CHOICE AWARD



33. David Olken
Island Diamond, 2010
Pigment on paper
24 x 30



34. Liliana Paradiso
Sicilian Afternoon, 2010
Oil on canvas
4 x 12



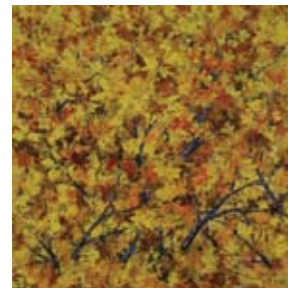
35. Sheli Petersen
Turkey Clan, 2011
Prisma color, soot and coffee
on paper
28 x 65½
CURRIER PRIZE



36. JoAnn Portalupi
Mother and Sons-1946, 2010
Oil on canvas
40 x 30



37. Stephen L. Previte
Grand Entrance, 2010
Oil on panel
20 x 24



38. Donald V. Rainville
Autumn at Springs, 2011
Oil on board
48 x 48



39. Donald Reed
Shoreline, 2010
Oil on canvas
24 x 36



40. Claudia Rippee
Bauhaus Meditation, 2011
 Archival inkjet print
 17 x 22



41. Claudia Rippee
Valley Street Cemetery: Granite's Revelation, 2011
 Archival inkjet print
 18 x 19



42. Sandra Samaha
After the Flood, 2011
 Oil and collage on board
 12 x 25 (in two parts)



43. Gail Sauter
Everyday, 2010
 Oil on linen
 24 x 24



44. William Scolere
River Watcher, 2010
 Linocut
 30 x 39½



45. Melissa Turner
Untitled, 2010
 Clay
 13 x 18 x 12



46. William C. Turner
Winged Warrior, 2009
 Oil on canvas
 48 x 36



47. Thomas A. Wright
Hot Time in Portsmouth, 2010
 Digital giclée print
 29 x 30